

- ◆ Supervision of two three-phase supply lines
- ◆ Emergency demand supervision for stand-by generating set
- ◆ Control of contactors, motorised circuit breakers or motorised changeover switches
- ◆ Event logging
- ◆ TRMS measurements of voltage values
- ◆ Microprocessor remote control and supervision
- ◆ RS232 and RS485 ports
- ◆ Modbus®-RTU and Modbus®-ASCII communication protocols
- ◆ Real time clock.



PAGE 19-2

**ATL10**

- Automatic transfer switch controller with RS232 port
- DC auxiliary supply
- 6 programmable digital inputs
- 6 programmable relay outputs.



PAGE 19-3

**ATL20**

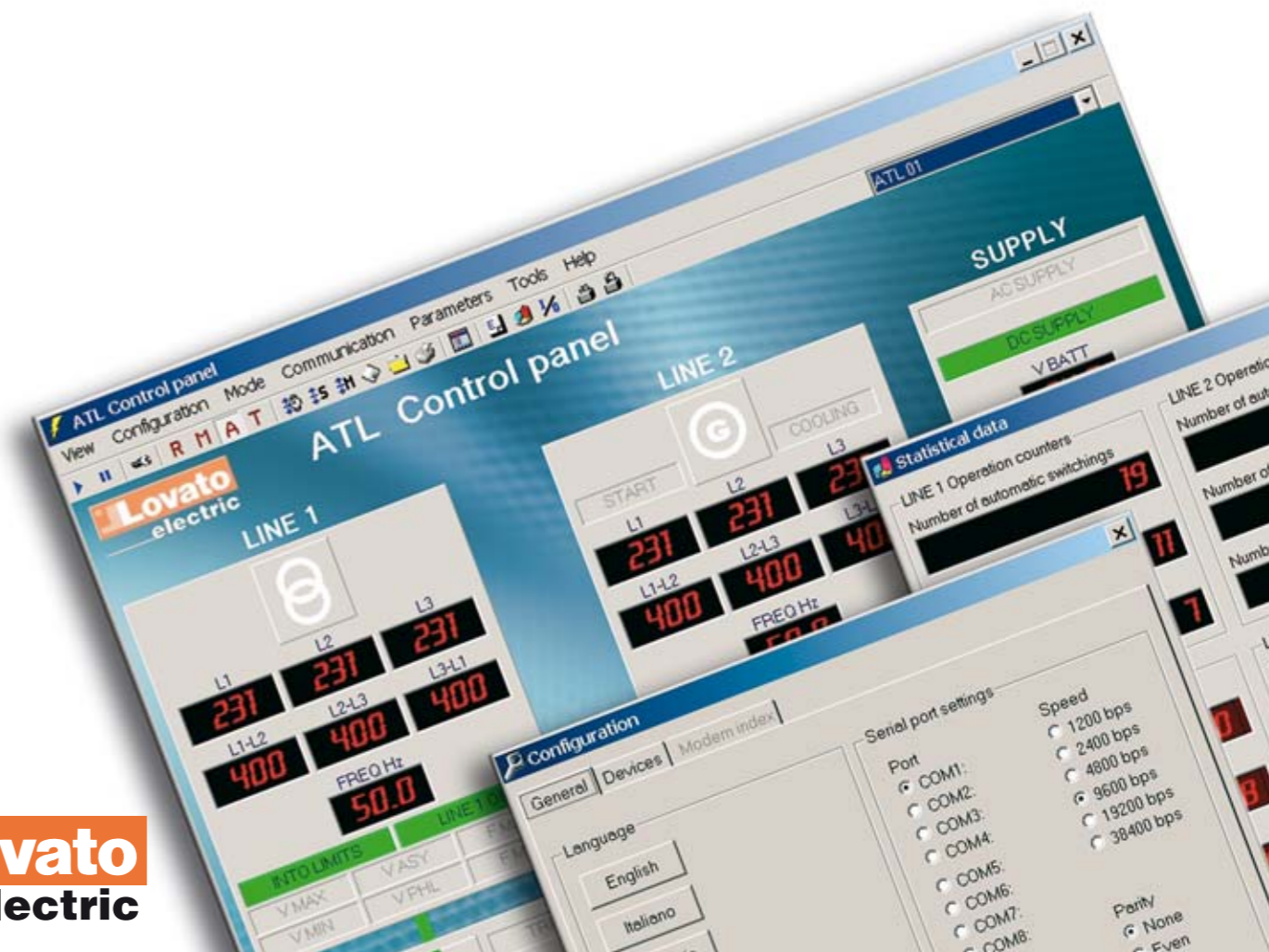
- Automatic transfer switch controller with RS232 port
- AC/DC auxiliary supply
- 8 digital inputs; 6 programmable
- 7 relay outputs; 5 programmable.

**ATL30**

- Automatic transfer switch controller with RS232 and RS485 ports
- Real time clock
- AC/DC auxiliary supply
- 8 digital inputs; 6 programmable
- 7 relay outputs; 5 programmable.

**Automatic transfer switch controllers**

	SEC.	PAGE
Automatic transfer switch controller ATL10 type .....	19-	2
Automatic transfer switch controller ATL20 and ATL30 type .....	19-	3
<b>Accessories</b> .....	19-	3



## Automatic transfer switch controller



ATL10



Order code	Description	Qty per pkg	Weight
		n°	[kg]
ATL10	Automatic transfer switch controller with RS232 port; 96x96mm	1	0.480

### General characteristics

The automatic transfer switch controller ATL10 is used for the automatic switching of the load from the MAIN LINE to a stand-by or emergency SECONDARY LINE and vice versa.

It is made of a single unit in an insulated housing and has two outputs for the "automatic" and/or "manual" control of contactors or motorised circuit breakers.

The transfer switch controller has the following main features:

- Supply input from battery supply 12-48VDC
- Measurement inputs of three-phase with neutral voltages, also suitable for 1 and 2-phase lines
- Display to view main and secondary line measurements
- 15 status LED indicators
- 6 digital inputs programmable
- 6 relay outputs programmable
- 3 operating modes: OFF-MAN-AUT
- Viewing of phase and phase-to-phase line voltage measurements
- Status viewing of motorised circuit breakers or contactors
- Configuration programming of lines and control parameters
- Emergency demand supervision parameter programming for stand-by generating sets
- Microprocessor supervision of functions
- RS232 communication interface
- Modbus<sup>®</sup>-RTU and Modbus<sup>®</sup>-ASCII communication protocols
- Set-up and remote control software via direct PC connection, analog or GSM modem or Ethernet network.

### CONTROL FUNCTIONS OF THE LINES

- Phase sequence and phase loss
- Minimum and maximum voltage
- Voltage asymmetry
- Minimum and maximum frequency.

### Operational characteristics

- Auxiliary supply
  - Auxiliary supply voltage: 12-48VDC
  - Operating range: 9-70VDC
  - Power consumption: 3W
  - Power dissipation: 3W
  - Current consumption: 250mA at 12VDC; 130mA at 24VDC; 65mA at 48VDC.
- Voltage measurement inputs
  - Rated voltage  $U_e$ : 480VAC phase-phase
  - Measurement range: 50-576VAC phase-phase
  - Frequency range: 45-65Hz.
- Digital inputs
  - Negative type of inputs
  - Input current:  $\leq 10$ mA.
- Relay outputs
  - 5 relay outputs, each with 1 NO contact
  - 1 relay output with 1 changeover contact.
- Housing
  - Flush-mount 96x96mm version
  - Degree of protection:
    - IP20 at rear
    - IP54 on front.

### Certifications and compliance

Certifications pending: cULus and GOST.

Compliant with: IEC/EN 60947-1, IEC/EN 60947-6-1, IEC/EN 61000-6-3, IEC/EN 61000-6-2.

## Automatic transfer switch controller



ATL20 A240  
ATL30 A240

Order code	Description	Qty per pkg	Weight
		n°	[kg]
<b>ATL20 A240</b>	Automatic transfer switch controller with RS232 port; 144x144mm	1	0.700
<b>ATL30 A240</b>	Automatic transfer switch controller with RS232 and RS485 ports and real time clock; 144x144mm	1	0.900

### General characteristics

The automatic transfer switch controllers "ATL20" and "ATL30" are used for the automatic switching of the load from the MAIN LINE to a stand-by or emergency SECONDARY LINE and vice versa.

They are made of a single unit in an insulated housing and have two outputs for the "automatic" and/or "manual" control of contactors or motorised circuit breakers.

The transfer switch controllers have the following main features:

- Dual supply input, one for AC and the other for battery supply
- Measurement inputs of three-phase with neutral voltages, also suitable for 1 and 2-phase lines
- 2 displays to view main and secondary line measurements
- 22 status LED indicators
- 8 digital inputs, 6 of which programmable
- 7 relay outputs, 5 of which programmable
- 4 operating modes: OFF-MAN-AUT-TEST
- Viewing of phase and phase-to-phase line voltage measures
- Viewing of motorised circuit breakers or contactors status
- Configuration programming of lines and control parameters
- Emergency demand supervision parameter programming for stand-by generating set
- Microprocessor supervision of functions
- RS232 communication interface
- RS485 opto-isolated communication interface for ATL30 A240 only
- Modbus<sup>®</sup>-RTU and Modbus<sup>®</sup>-ASCII communication protocols
- Set-up and remote control software via direct PC connection, analog or GSM modem or Ethernet network.

### CONTROL FUNCTIONS OF THE LINES

- Phase sequence and phase loss
- Minimum and maximum voltage
- Voltage asymmetry
- Minimum and maximum frequency.

### Operational characteristics

- Auxiliary supply
  - Auxiliary supply voltage: 12-48VDC and 220-240VAC<sup>Ⓜ</sup>
  - Operating range: 9-70VDC; 187-264VAC
  - Power consumption: 9VA at 240VAC
  - Power dissipation: 4.1W at 48VDC; 6.3W at 240VAC
  - Current consumption: 300mA at 12VDC; 180mA at 24VDC; 90mA at 48VDC
  - Frequency range: 45-65Hz
- Voltage measurement inputs
  - Rated voltage U<sub>e</sub>: 690VAC phase-phase (400VAC phase-neutral)
  - Measurement range: 80-800VAC phase-phase
  - Frequency range: 45-65Hz.
- Digital inputs
  - Negative type of input
  - Input current: ≤10mA.
- Relay outputs
  - 5 relay outputs, each with 1 NO contact
  - 2 relay outputs, each with 1 changeover contact.
- Housing
  - Flush-mount 144x144mm version
  - Degree of protection:
    - IP20 at rear
    - IP41 on front, without protective cover
    - IP54 on front, complete with protective cover.

### Certifications and compliance

Certifications obtained: cULus and GOST.  
Compliant with: IEC/EN 60947-1, IEC/EN 60947-6-1, IEC/EN 61000-6-3, IEC/EN 61000-6-2.

<sup>Ⓜ</sup> Other AC voltages are available on request.

## Accessories

Order code	Description	Qty per pkg	Weight
		n°	[kg]
Software for ATL10, ATL20 A240 and ATL30 A240.			
<b>ATL SW</b>	Set-up and remote control software complete with 51 C2 cable	1	0.246
Accessories and spare parts for ATL10.			
<b>51 C2</b>	PC ↔ ATL connecting cable, 1.8m long	1	0.090
<b>31 PA96X96</b>	Front IP54 protective cover	1	0.077
Accessories and spare parts for ATL20 A240 and ATL30 A240.			
<b>51 C2</b>	PC ↔ ATL connecting cable, 1.8m long	1	0.090
<b>31 PACR</b>	Front IP54 protective cover	1	0.107
Accessories and spare parts for ATL30 A240.			
<b>51 C4</b>	PC ↔ 4 PX1 converter connecting cable, 1.8m long	1	0.147
<b>51 C5</b>	ATL ↔ analog modem connecting cable, 1.8m long	1	0.111
<b>51 C6</b>	ATL ↔ 4 PX1 converter connecting cable, 1.8m long	1	0.102
<b>51 C7</b>	ATL ↔ GSM modem connecting cable, 1.8m long	1	0.137
<b>4 PX1</b>	RS232/RS485 converter drive, opto-isolated, 220-240VAC <sup>Ⓛ</sup>	1	0.600

<sup>Ⓛ</sup> RS232/RS485 opto-isolated converter drive, 38,400 Baud rate maximum, automatic or manual TRANSMIT line supervision., 220-240VAC ±10% (110-120VAC supply on request).